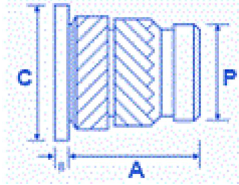
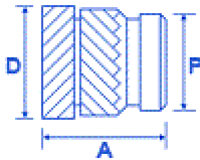


HIS:

FSUK-HISH



FSUK-HIS



Dimensions

thread	A	B	C	D	P	H.Size	W.Thickness
M2	4,0	0,53	4,8	3,6	3,1	3,2	1,3
M2.5	5,7	0,61	5,5	4,6	3,9	4,0	1,6
M3	5,7	0,61	5,5	4,6	3,9	4,0	1,6
M3.5	7,1	0,76	6,4	5,4	4,7	4,8	1,8
M4	8,2	0,91	7,1	6,3	5,5	5,6	2,1
M5	9,5	1,09	7,9	7,1	6,3	6,4	2,6
M6	12,7	1,35	9,5	8,7	7,9	8,0	3,3
M8	12,7	1,35	11,1	10,2	9,5	9,6	4,5
M10	12,7	1,35	14,0	12,3	11,6	11,7	6,0

Advantages

- HIGH TORQUE AND PULL OUT
- SUITABLE FOR THIN BOSS WALLS TO MAXIMISE DESIGN SPACE
- HEADED VERSION FOR ELECTRICAL CONTACT AND HIGHER PERFORMANCE

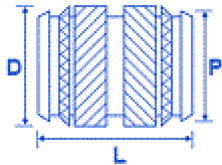
Comments

- DESIGN ALLOWS RAPID INSTALLATION USING HEAT OR ULTRASONICS
- NOW STOCKING NON STANDARD LENGTHS IN M3 UP TO M6 AND MALE THREADED VERSIONS
- DESIGNATION EXAMPLE: FSUK HIS-B-M3 UNHEADED
- FSUK HISH B M3 HEADED VERSION
- PLEASE NOTE HOLE SIZES APPLY TO THE POINT REACHED AT THE BOTTOM OF THE INSERT
- AVAILABLE IN BRASS + SOME SIZES IN STAINLESS
- MOST SIZES AVAILABLE FROM STOCK
- CONTACT FSUK FOR FURTHER INFO

Description

The HIS range of inserts has been developed with an opposing herringbone knurl on the outside to give a high level of performance in most Thermoplastics. This insert is available in a headed version to increase performance and aid with Electrical contacts.

Its designed to be installed into drilled or moulded holes using either direct heat or ultrasonic. The insert is designed with a pilot end to aid insertion.

DUO:**FSUK-DUO****Dimensions**

thread	D	P	L	H.Size	W.Thickness
M2	3,5	3,1	3,9	3,2	1,3
M2.5	4,4	3,9	5,7	4,0	1,6
M3	4,4	3,9	5,7	4,0	1,6
M3.5	5,2	4,7	7,1	4,8	1,8
M4	6,1	5,5	8,1	5,6	2,1
M5	6,8	6,3	9,5	6,4	2,6
M6	8,5	7,9	12,7	8,0	3,3
M8	10,0	9,5	12,7	9,6	4,5
M10	12,3	11,8	12,7	11,9	6,0

Advantages

HIGH TORQUE AND PULL OUT
 SUITABLE FOR THIN BOSS WALLS TO MAXIMISE DESIGN SPACE
 DESIGN ALLOWS RAPID INSTALLATION USING HEAT
 AVAILABLE IN SHORTER LENGTHS
 SYMMETRICAL TO AID WITH INSTALLATION

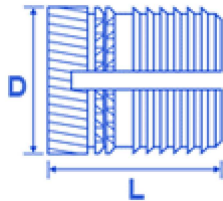
Description

The Duo range is based on a opposing herringbone knurl with the advantage of it being symmetrical.

Its designed to be installed into drilled or moulded holes using direct heat. (Not Ultrasonic's)

Comments

DESIGNATION EXAMPLE FSUK DUO B M3 M3 BRASS VERSION
 PLEASE NOTE HOLE SIZES APPLY TO THE POINT REACHED AT THE
 BOTTOM OF THE INSERT
 ONLY AVAILABLE IN BRASS
 MOST SIZES EX STOCK

EXPP:**FSUK-EXPP****Dimensions**

thread	D	L	H.Size	W.Thickness
M2	3,7	4.0	3,2	1,6
M2.5	4,5	5.8	4.0	2,0
M3	4,5	5.8	4,0	2,0
M4	6,2	8.2	5,6	2,8
M5	6,9	9.5	6,4	3,2
M6	8,5	12.7	8,0	4,0
M8	10,1	12.7	9,6	4,8

Advantages

FAST AND EASY TO INSTALL WITHOUT THE NEED FOR HEAT
HIGH PERFORMANCE
SUITABLE FOR THE MAJORITY OF THERMOPLASTIC

Comments

PLEASE NOTE HOLE SIZES APPLY TO THE POINT REACHED AT
THE BOTTOM OF THE INSERT
EXAMPLE DESIGNATION FSUK EXPP B M3

Description

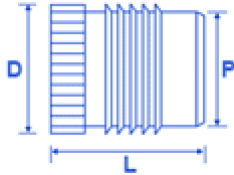
The FSUK EXPP insert is a high performance press in insert designed for Thermoplastics.

Its designed to be pressed in cold into drilled or moulded holes.

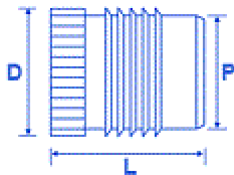
The insert has a anti vibration feature but without the high installation torque required with the EXP range.

PU:

FSUK-PUH



FSUK-PU



Dimensions

thread	B	C	D	P	L	H.Size	W.Thickness
M2	0,45	4,8	3,7	3,1	4.0	3,2	1,6
M2.5	0,58	5,5	4,5	3,9	4.8	4,0	2,0
M3	0,58	5,5	4,5	3,9	4.8	4,0	2,0
M3.5	0,74	6,4	5,3	4,7	6.4	4,8	2,4
M4	0,89	7,1	6,1	5,5	7.9	5,6	2,8
M5	1,07	7,9	7,0	6,3	9.5	6,4	3,2
M6	1,32	9,5	8,6	7,9	12.7	8,0	4,0
M8	1,32	11,0	10,2	9,5	12.7	9,6	4,8

Advantages

FAST AND EASY TO INSTALL WITHOUT THE NEED FOR HEAT
HIGH PERFORMANCE

SUITABLE FOR THE MAJORITY OF THERMOPLASTICS

FREE RUNNING THREAD

HEADED VERSION FOR ELECTRICAL CONTACT AND HIGHER PERFORMANCE

Comments

PLEASE NOTE HOLE SIZES APPLY TO THE POINT REACHED AT THE BOTTOM OF THE INSERT

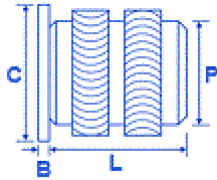
Description

The FSUK PU insert is cold press in insert which is designed with a free running thread and will suit most types of Thermoplastics.

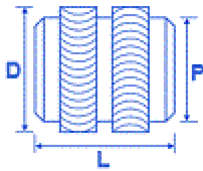
Its designed to be pressed in cold into drilled or moulded holes and due to its combination of fins and knurls can achieve a high performance.

HIHL:

FSUK-HIHLH



FSUK-HIHL



Dimensions

thread	B	C	D	P	L	H.Size	W.Thickness
M2	0,51	4,8	3,5	3,1	3.9	3,2	1,4
M2.5	0,58	5,5	4,4	3,9	5.8	4,0	1,8
M3	0,58	5,5	4,4	3,9	5.8	4,0	1,8
M3.5	0,74	6,4	5,2	4,7	7.1	4,8	2,1
M4	0,89	7,1	6,1	5,5	8.1	5,6	2,4
M5	1,07	7,9	6,9	6,3	9.5	6,4	2,8
M6	1,32	9,5	8,5	7,9	12.7	8,0	3,6
M8	1,32	11,1	10,0	9,5	12.7	9,6	5,0

Advantages

SYMMETRICAL TO AID WITH INSTALLATION
 DESIGNED TO REDUCE STRESS FOR USING WITH AMORPHOUS PLASTICS
 HEADED VERSION FOR ELECTRICAL CONTACT AND HIGHER PERFORMANCE

Comments

PLEASE NOTE HOLE SIZES APPLY TO THE POINT REACHED AT THE BOTTOM OF THE INSERT
 EXAMPLE DESIGNATION FSUK HIHL B M3 UNHEADED M3
 FSUK HIHLH B M3 HEADED M3
 ONLY AVAILABLE IN BRASS

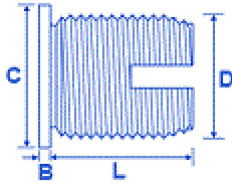
Description

The HIHL range has been designed with a rounded crest and knurl configuration to be installed into Notch Sensitive Plastics such as 30% Glass Filled Polycarbonate. This insert reduces the stress and is available in a headed version to increase performance and aid with Electrical contacts.

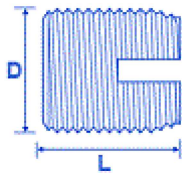
Its designed to be installed into drilled or moulded holes using direct heat and reduces the risks associated with cracking .

SCR: Inserts for Thermo Plastics

FSUK-SCRH



FSUK-SCR



Dimensions

thread	B	C	D	L	H.Size	H.size2
M2.5	0,58	6,0	4,5	6.0	4,0 - 4,1	4,1 - 4,3
M3	0,58	6,5	5,0	6.0	4,5 - 4,6	4,6 - 4,8
M3.5	0,73	7,5	6,0	8.0	5,3 - 5,4	5,5 - 5,7
M4	0,89	8,0	6,5	8.0	5,8 - 5,9	6,0 - 6,2
M5	1,06	9,5	8,0	10.0	7,1 - 7,2	7,3 - 7,6
M6	1,32	12,0	10,0	14.0	8,6 - 8,8	9,0 - 9,4
M8	1,32	14,0	12,0	15.0	10,6 - 10,8	11,0 - 11,4
M10	1,57	16,0	14,0	18.0	12,6 - 12,8	13,0 - 13,4

Advantages

- HIGH PULL OUT RESISTANCE.
- HEADED VERSION FOR ELECTRICAL CONTACT AND HIGHER PERFORMANCE.
- CAN BE USED IN MOST TYPES OF MATERIALS.
- AVAILABLE IN HARDENED STEEL AND STAINLESS.

Comments

EXAMPLE DESIGNATION FSUK SCR B M3 FSUK SCRH B M3 (HEADED)
 AVAILABLE IN BRASS, HARDENED STEEL AND STAINLESS STEEL
 PLEASE NOTE HOLE SIZE 1 IS A GUIDE FOR THERMOPLASTICS AND
 HOLESIZE 2 IS A GUIDE FOR THERMOSETTING PLASTICS. CONTACT FSUK
 FOR FURTHER INFO IF REQUIRED.
 PLEASE NOTE THAT THE WALL THICKNESS WOULD BE TYPICALLY
 MINIMUM 0.3 X D ON THE SCR.
 THE SCRH RANGE STARTS FROM THREAD SIZE M4.

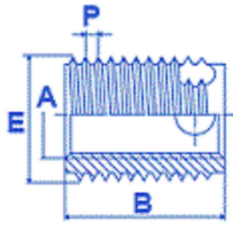
Description

The SCR range is a Self Tapping range of inserts with internal and external threads and a slot to aid installation.

Its designed to be installed into drilled or moulded holes and can be used where Maximum strength is required.

SCRS: Inserts for Plastics, Metals and Composites

FSUK-SCRS



Dimensions

thread	B	P	E	H.Size	H.size2
M5-7	7	1	8	7.4-7.6	7.6-7.7
M5-10	10	1	8	7.4-7.6	7.6-7.7
M6-8	8	1.25	10	9.3-9.5	9.5-9.6
M6-12	12	1.25	10	9.3-9.5	9.5-9.6
M8-9	9	1.5	12	11.1-11.3	11.3-11.5
M8-14	14	1.5	12	11.1-11.3	11.3-11.5
M10-10	10	1.5	14	13.1-13.3	13.3-13.5
M10-18	18	1.5	14	13.1-13.3	13.3-13.5
M12-12	12	1.75	16	15.0-15.2	15.2-15.4
M12-22	22	1.75	16	15.0-15.2	15.2-15.4
M14-14	14	2	18	17.0-17.2	17.2-17.4
M14-24	24	2	18	17.0-17.2	17.2-17.4
M16-14	14	2	20	19.0-19.2	19.2-19.4
M16-24	24	2	20	19.0-19.2	19.2-19.4

Advantages

HIGH PULL OUT RESISTANCE, DEVELOPED FOR MATERIALS WITH DIFFICULT CUTTING PROPERTIES, THE INSERT HAS A THICK WALL AND THE CUTTING FORCE IS DISTRIBUTED OVER THREE CUTTING EDGES. SHORTER VERSION AVAILABLE IN ALL SIZES WHERE MINIMAL MATERIAL THICKNESSES ARE INVOLVED. GENERALLY SOLD IN HARDENED STEEL WITH A RoHS COMPLIANT ZINC AND CLEAR PASSIVATION.

Comments

TO SPECIFY SIMPLY SPECIFY THE INSERT TYPE- FSUK SCRS AND THEN THE THREAD SIZE, LENGTH AND THEN FINISH FOR EXAMPLE, A M8-14 LONG WOULD BE FSUK SCRS M8-14-Z (Z= ZINC AND CLEAR PASS).

ALSO AVAILABLE IN STAINLESS. M8, M10 AND M12 CURRENTLY STOCKED BUT MOST SIZES ARE AVAILABLE.

PLEASE NOTE HOLESIZE 1 FOR PLASTIC AND HOLESIZE 2 FOR METAL.

PLEASE NOTE THAT THE WALL THICKNESS WOULD BE TYPICALLY MINIMUM 0.3 X E ON THE SCRS.

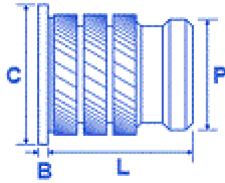
PLEASE NOTE DEPTH ON BLIND HOLE SHOULD BE 10% MIN OF DIM B FOR PLASTICS AND 15% MIN FOR METAL

Description

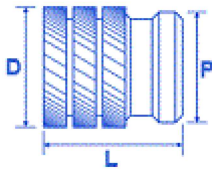
The SCRS range is a Self Tapping range of inserts with internal and external threads and 3 holes to aid installation. Its designed to be installed into drilled or moulded holes generally for Thermosetting Plastics with up to 50% Glass Filled like Grivory. They are also an Excellent Insert to obtain a wear free, vibration resistant insert for Aluminium and Aluminium and Magnesium alloys. Can also be used in Thermo Plastics.

MU:

FSUK-MUH



FSUK-MU



Dimensions

thread	B	C	D	P	L	H.Size	W.Thickness
M2	0,51	4,8	3,3	3,0	4.1	3,1	1,6
M2.5	0,58	5,5	4,2	3,7	5.3	3,8	2,0
M3	0,58	5,5	4,2	3,7	5.3	3,8	2,0
M3.5	0,74	6,4	5,0	4,5	6.3	4,6	2,5
M4	0,80	7,1	5,8	5,3	7.4	5,4	2,5
M5	1,07	7,9	6,6	6,1	8.3	6,2	2,5
M6	1,32	9,5	8,2	7,7	9.2	7,8	2,8
M8	1,32	11,1	9,7	9,3	9.2	9,3	3,8
M10	1,57	14,0	12,0	11,5	9.2	11,6	5,0

Advantages

- FAST AND EASY TO INSTALL
- A SPECIAL PILOT END PREVENTS INSTALLATION PROBLEMS
- RELATIVELY SMALL DIAMETER AND LENGTH
- HEADED VERSION FOR ELECTRICAL CONTACT AND HIGHER PERFORMANCE
- HIGH TORQUE RESISTANCE

Comments

PLEASE NOTE HOLE SIZES APPLY TO THE POINT REACHED AT THE BOTTOM OF THE INSERT
 EXAMPLE DESIGNATION FSUK MU B M3
 SOME SIZES AVAILABLE IN STAINLESS

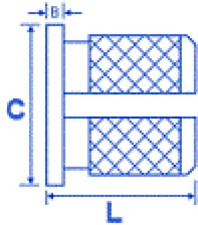
Description

The FSUK MU range is designed with multiple helically knurled rings designed to be installed into hard brittle thermosetting plastics. These inserts are often used in the Electrical industry.

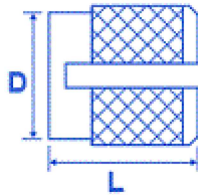
It's designed to be installed cold into drilled or moulded holes the sharp knurls allows high performance in thinner bases.

EXP:

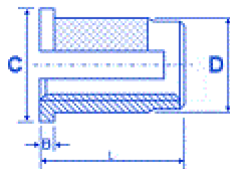
FSUK-EXPH



FSUK-EXP



FSUK-EXPR



Dimensions

thread	B	C	D	L	H.Size	W.Thickness
M2	0,43	4,8	3,2	3.9	3,2	2,4
M2.5	0,51	5,5	4,0	4.7	4,0	3,2
M3	0,51	5,5	4,0	4.7	4,0	3,2
M3.5	0,66	6,4	4,7	6.3	4,8	3,6
M4	0,82	7,1	5,5	7.9	5,6	4,0
M5	0,99	7,9	6,3	9.4	6,4	4,8
M6	1,25	9,5	7,9	12.6	8,0	6,0
M8	1,25	11,1	9,5	12.6	9,6	7,0

Advantages

- FAST AND EASY TO INSTALL
- SCREW IS SECURED AUTOMATICALLY AGAINST LOOSENING
- HEADED AND REVERSE HEAD AVAILABLE TO ENABLE THE INSERT TO GO ON THE BACK OF THE MOULDING

Comments

EXAMPLE DESIGNATION FSUK EXP B M4= M4 BRASS FLUSH EXPANSION INSERT
 FSUK EXPH-B-M4 M4 BRASS HEADED VERSION
 FSUK EXPR B M4 M4 REVERSE TYPE EXPANSION INSERT
 PLEASE NOTE HOLE SIZES APPLY TO THE POINT REACHED AT THE BOTTOM OF THE INSERT
 ONLY AVAILABLE IN BRASS
 MOST SIZES AVAILABLE FROM STOCK

Description

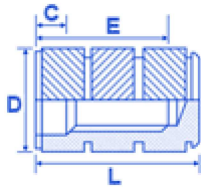
The FSUK EXP range is designed around a diamond knurl configuration with a slot which enables the insert to expand when the mating screw is assembled. This insert is designed more for Thermosetting Plastics although can be used in some Thermoplastics.

Available in a headed and reverse head; it is designed with an anti vibration feature to stop the screw working loose after assembly.

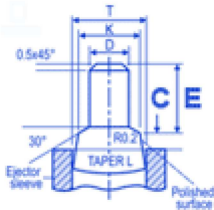
Its designed to be pressed in cold into drilled or moulded holes.

BLD: Moulded In Inserts

FSUK-BLD



Mould Pin



Description

The FSUK BLD range is a blind insert designed for Moulding in rather than post insertion. The opposing herringbone knurl gives a very high level of performance.

The location pin should be designed as per our dimensions to ensure the insert locates correctly during the moulding process.

Dimensions				
thread	C	D	E	L
M2	1.2	3.4	3.6	5.5
M3	1.3	4.7	4.6	7.3
M4	1.8	6.3	6.7	10.2
M5	2.0	7.3	7.4	11.2
M6	2.0	9.8	8.1	14.4
M8	2.3	11.4	11.1	16.5

Advantages

- BLIND ENDED TO AVOID ANY PLASTIC ENTERING THE INTERNAL THREAD
- CAN BE INSTALLED INTO VERY LARGE MOULDINGS
- VERY HIGH LEVEL OF PERFORMANCE
- FREE RUNNING THREAD
- MOST SIZES EX STOCK

Comments

Mould pin design is critical to the success of the moulding-in operations since the features shown are used to locate and retain the insert prior to moulding and prevent the ingress of plastic during the process.

- HOW TO SPECIFY: FSUK BLD B M5
- ONLY AVAILABLE IN BRASS
- ALL STOCK SIZES

Dimensions – Mould Pin						
thread	C	D	E	K	L	T
M2	0.8	1.55	2.65	2.3	6	3.00
M3	1.05	2.45	3.40	3.125	4.5	4.00
M4	1.50	3.25	5.0	4.425	4.5	5.40
M5	1.70	4.15	5.55	5.125	5	6.00
M6	1.80	4.95	6.15	6.600	5.5	8.00
M8	2.00	6.70	9.00	8.500	6	10.00