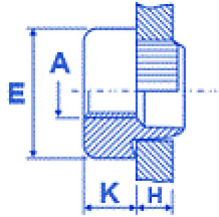


ANCHOR:

FSUK-ANCHOR



Description

The FSUK Anchor rivet bush is designed with serrations on the spigot and can be used in material as thin as 0.5mm up to 5.9mm.

The spigot is designed to go through the sheet and be riveted over on the back allowing it to go into all types of material. They are generally available in Steel Self colour or Zinc and Clear Pass(C3) and Stainless Steel.

It is designed to be installed into drilled or punched holes.

Please note stock sizes are M3-M10

Dimensions

thread	E	K	H.Size
M2	8.0	2.3	5.9
M2.5	8.0	3.2	5.9
M3	8.0	3.2	5.9
M3.5	9.5	3.8	7.0
M4	9.5	3.8	7.0
M5	11	4.4	8.35
M6	12.5	5.7	9.65
M8	16.0	6.4	13.1
M10	19.0	7.6	15.5
M12	25.4	10.2	19.6
M14	25.4	10.2	19.6
M16	25.4	10.2	19.5

Advantages

CAN BE INSTALLED MANUALLY OR WITH AN AUTO FEED PRESS
VERY HIGH PERFORMANCE DUE TO ITS RIVETING ACTION ON
THE BACK OF THE SHEET METAL
SUITABLE FOR USE IN DRILLED OR PUNCHED HOLES

Comments

HOW TO SPECIFY:

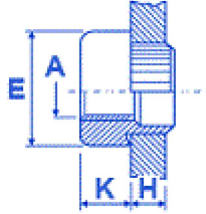
EXAMPLE FSUK ANCHOR M4 1.6mm S-Z FOR EACH SIZE JUST
SPECIFY THE MATERIAL THICKNESS (H)

S= STEEL STST= STAINLESS SC= SELF COLOUR SPECIFY Z FOR
ZINC PLATED (TRIVALENT C3) AT THE END OF PART NO

Hole Size tolerance is -0/+0.1mm

MINI-ANCHOR: Rivet Bushes

FSUK-MINIANCHOR



Description

The FSUK Mini-Anchor range has all the features of the standard Anchor but with a smaller body and panel range.

The spigot is designed to go through the sheet and be riveted over on the back allowing it to go into all types of material. They are generally available in Steel Self colour or Zinc and Clear Pass and Stainless Steel.

The Mini bushes are designed to be almost flush on the back of the sheet and can be installed into material between 0.5mm-3mm.

It is designed to be installed into drilled or punched holes.

Dimensions

thread	E	K	H.Size
M2	5.0	2.3	3.5
M2.5	5.5	2.8	4,3
M3	5.5	2.8	4,3
M3.5	7.0	3.2	5.5
M4	7.0	3.2	5.5
M5	8.5	3.8	6.5
M6	10	5.1	7.7
M8	12	6.5	9.7

Advantages

CAN BE INSTALLED MANUALLY OR WITH AN AUTO FEED PRESS
SUITABLE FOR USE IN DRILLED OR PUNCHED HOLES
CAN BE INSTALLED CLOSE TO THE PANEL EDGE
SMALLER BODY GIVES MORE DESIGN SPACE

Comments

HOW TO SPECIFY:

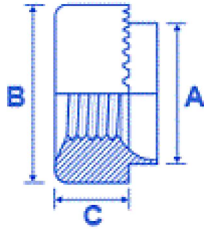
FSUK MINI-ANCHOR M4-1.6mm-S-Z

Specify Material thickness (H) and Anchor Material then Finish
AVAILABLE IN SELF COLOUR, STEEL ZINC & TRIVALENT AND
STAINLESS

M3&M4 AVAILABLE IN MOST GUAGE SIZES FROM STOCK

SERRATED:

FSUK-SERRATED



Description

The FSUK serrated face bush is offered as an alternative to the Serrated spigot and has a range of different hole sizes to give designers and sheet metal sub contractors a choice.

The spigot is designed to go through the sheet and be rivetted over on the back allowing it to go into all types of material. They are generally available in Steel Self colour or Zinc and Clear Pass and Stainless Steel.

The FSUK Serrated face rivet bush can be used in material as thin as 0.5mm up to 5.9mm.

It is designed to be installed into drilled or punched holes.

Dimensions

thread	A	B	C	H.Size
M2.5	5,54	7,92	3,17	5,54
M3	5,54	7,92	3,17	5,54
M3.5	6,73	9,52	3,17	6,73
M4	6,73	9,52	3,17	6,73
M5	7,92	11,10	3,81	7,92
M6	9,52	12,70	5,08	9,52
M8	12,70	15,87	6,35	12,70
M10	15,87	19,05	7,62	15,87
M12	19,05	25,40	10,16	19,05

Advantages

CAN BE INSTALLED MANUALLY OR WITH AN AUTO FEED PRESS
 VERY HIGH PERFORMANCE DUE TO ITS RIVETING ACTION ON THE BACK OF THE SHEET METAL
 SUITABLE FOR USE IN DRILLED OR PUNCHED HOLES

Comments

HOW TO SPECIFY

FSUK M4-16 SWG SERR STEEL TRIVALENT

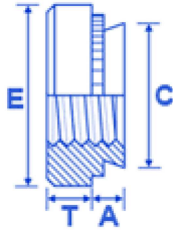
Specify Guage size Fastener is fixing into and then material of Rivet Bush.

Available in Self Colour, Steel or Stainless. Also available with Serrations on Spigot.

Please note Dimension A tolerance is +0/-0.2mm. Hole size tolerance is -0/+0.1mm and we recommend you punch or drill the hole towards the top limit.

SCN:

FSUK-SCN



Description

The FSUK Self clinch nut persuades material from the mating sheet to flow around the self clinch groove and notches. They are designed to ensure the sheet is completely flush on the back and each size of nut can be installed into a large panel range.

The steel nuts are hardened and designed to go into sheet less than 80 Rockwell B, the stainless version is designed to go into less than 70 Rockwell B.

It is designed to be installed into drilled or punched holes and must always be installed using a Squeeze action Press.

Dimensions

thread	A	shank	C	E	T	H.Size	Sheet
M2	0,76	0	4.20	6.3	1,5	4,25	0,8
M2	0,97	1	4.20	6.3	1,5	4,25	1,0
M2	1,37	2	4.20	6.30	1,5	4,25	1,4
M2.5	0,76	0	4.20	6.3	1,5	4,25	0,8
M2.5	0,97	1	4.20	6.3	1,5	4,25	1,0
M2.5	1,37	2	4.2	6.3	1,5	4,25	1,4
M3	0,76	0	4.20	6.30	1,5	4,25	0,8
M3	0,97	1	4.20	6.30	1,5	4,25	1,0
M3	1,37	2	4.20	6.30	1,5	4,25	1,4
M3 (4.75)	0,76	0	4.75	7.1	1,75	4,75	0,8
M3 (4.75)	0,97	1	4.75	7.10	1,75	4,75	1,0
M3 (4.75)	1,37	2	4.75	7.10	1,75	4,75	1,4
M4	0,76	0	5.40	7.90	2,0	5,4	0,8
M4	0,97	1	5.40	7.90	2,0	5,4	1,0
M4	1,37	2	5.40	7.90	2,0	5,4	1,4
M4 (2.3)	0,76	0	5.40	7.90	2.3	5,4	0,8
M4 (2.3)	0,97	1	5.40	7.90	2.3	5,4	1,0
M4 (2.3)	1,37	2	5.40	7.90	2.3	5,4	1,4
M5	0,76	0	6.40	8.70	2,0	6,4	0,8
M5	0,97	1	6.40	8.70	2,0	6,4	1,0
M5	1,37	2	6.40	8.70	2,0	6,4	1,4
M5 (2.3)	0,76	0	6.40	8.70	2.3	6,4	0,8
M5 (2.3)	0,97	1	6.40	8.70	2.3	6,4	1,0
M5 (2.3)	1,37	2	6.40	8.70	2.3	6,4	1,4
M6	1,37	1	8.75	11.0 5	4,1	8,75	1,4
M6	2,21	2	8.75	11.0 5	4,1	8,75	2,3
M8	1,37	1	10.50	12.6 5	5,5	10,5	1,4
M8	2,21	2	10.50	12.6 5	5,5	10,5	2,3
M10	2.21	1	14.00	17.3 0	7.5	14	2.3
M10	3.05	2	14.00	17.3 0	7.5	14	3.1

Advantages

SUITABLE FOR USE IN DRILLED OR PUNCHED HOLES. REVERSE SIDE OF SHEET WILL BE COMPLETELY FLUSH.

Comments

TO SPECIFY= FSUK M4-1- S (STEEL)-Z (TRIVALENT). PLEASE NOTE WE STOCK ALL BODY TYPE TO SUIT THE LARGER HOLE IN M3, FOR EXAMPLE M3 (4.75) AND ALSO THE THICKER DIMENSION T ON M4 AND M5 WHICH IS 2.3MM.

PLEASE NOTE DIMENSION A IS A MAXIMUM THERE IS NO MINIMUM

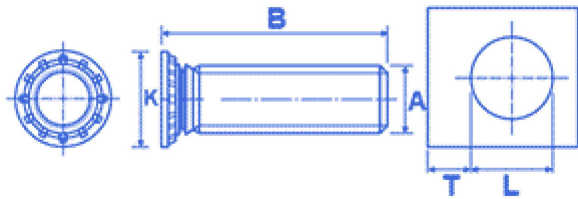


Fastening Solutions UK

FSUK stocks one of the largest range
of Threaded Inserts for Plastics.

SCS: Self Clinching Fasteners

FSUK-SCS



Description

The FSUK Self Clinch studs is designed to be flush into a range of sheet metal without any need for welding.

The studs are available in a variety of thread sizes and lengths.

The FSUK Self clinch studs persuades material from the mating sheet to flow around the self clinch groove and notches.

The steel studs are hardened and designed to go into sheet less than 80 Rockwell B, the stainless version is designed to go into less than 70 Rockwell B.

It is designed to be installed into drilled or punched holes and must always be installed using a squeeze action. The tolerance on the hole must be $-0.00 + 0.08\text{mm}$

Dimensions

thread	K	L	T	Sheet
M2.5	4.0	2.5	0.4	1
M3	4.6	3	0.8	1
M4	5.9	4	1.9	1
M5	6.5	5	3.8	1
M6	8.2	6	8	1.5
M8	9.6	8	12	1.5

Advantages

SUITABLE FOR USE IN DRILLED OR PUNCHED HOLES
 HEAD IS DESIGNED TO BE INSTALLED FLUSH WITH THE SHEET
 AVAILABLE IN STEEL AND STAINLESS
 STUD WILL ALWAYS BE INSTALLED PERPENDICULAR TO PANEL
 NO WELDING REQUIRED

Comments

HEAD TOLERANCE $\pm 0.4\text{mm}$

HOW TO SPECIFY: THREAD SIZE X LENGTH STEEL TRIVALENT FINISH OR STAINLESS.

IE FSUK M4-10 STEEL TRIVALENT

PLEASE NOTE LENGTHS(B) AVAILABLE AS FOLLOWS:

M3-6/8/10/12/14/15/16/18/20/25/30/35

M4-6/8/10/12/14/15/16/18/20/25/30/35/38

M5-8/10/12/14/15/16/18/20/25/30/35/38

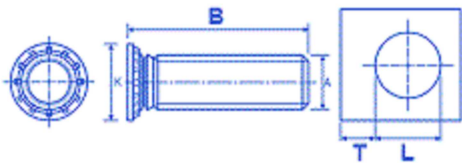
M6-10/12/14/15/16/18/20/25/30/35/38

M8-10/12/15/16/18/20/25/30/35/38/50

PLEASE CHECK WITH FSUK FOR AVAILABILITY OVER 30 LONG
 PRODUCT IS AVAILABLE IN STEEL TRIVALENT FINISH, GEOMET 500 (ONLY SOME SIZES) AND STAINLESS
 MOST SIZES EX STOCK

HPS: Self Clinching Fasteners

FSUK-SCHPS



Description

The FSUK high performance studs are available for applications where a flush head is not required and a very high performance is.

The FSUK Self clinch studs persuades material from the mating sheet to flow around the self clinch groove and notches.

The steel studs are hardened and designed to go into sheet less than 80 Rockwell B.

It is designed to be installed into drilled or punched holes and must always be installed using a squeeze action. The tolerance on the hole must be $-0.00 + 0.13\text{mm}$.

Dimensions

thread	K	L	T	H.Size
M5	7.8	5	10,5	5.0
M6	9.4	6	11,5	6.0
M8	12.5	8	12,5	8.0
M10	15.7	10	13,5	10.0

Advantages

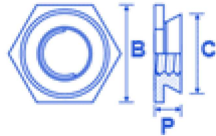
SUITABLE FOR USE IN DRILLED OR PUNCHED HOLES
STUD WILL ALWAYS BE INSTALLED PERPENDICULAR TO PANEL
NO WELDING REQUIRED
HIGH TORQUE RESISTANCE

Comments

HOW TO SPECIFY
FSUK SCHPS M8-20 (B) STEEL TRIVALENT
SOME SIZES AVAILABLE IN STAINLESS- PLEASE CLICK ON THE
CONTACT US @ FSUK AND PLACE ENQUIRY TO CHECK
AVAILABILITY

FLUSH: Self Clinching Fasteners

FSUK-FLUSH



Description

The FSUK Flush range provides a strong reusable thread in sheet metal with a flush finish on both sides.

It is designed to be installed into drilled or punched holes and must always be installed using a squeeze action. The tolerance on the hole must be $-0.00 + 0.13\text{mm}$.

The Nuts are manufactured from stainless steel and must be installed into sheet hardness of less than 70 Rockwell B.

Dimensions

thread	shank	B	C	P	H.Size	Sheet	Min Dis**
M2.5	1	4,8	4,35	1,5	4,4	1,5	6,0
M2.5	2	4,8	4,35	2,3	4,4	2,4	6,0
M3	1	4,8	4,35	1,5	4,4	1,5	6,0
M3	2	4,8	4,35	2,3	4,4	2,4	6,0
M3 (5.4)	1	6,4	5,35	1,5	5,4	1,5	6,5
M3 (5.4)	2	6,4	5,35	2,3	5,4	2,4	6,5
M3.5	1	6,4	5,35	1,5	5,4	1,5	6,5
M3.5	2	6,4	5,35	2,3	5,4	2,4	6,5
M4	1	7,9	7,35	1,5	7,4	1,5	7,2
M4	2	7,9	7,35	2,3	7,4	2,4	7,2
M5	1	8,7	7,90	1,5	7,9	1,5	8,8
M5	2	8,7	7,90	2,3	7,9	2,4	8,8
M6	1	9,5	8,75	3,1	8,75	3,2	8,8
M6	2	9,5	8,75	3,9	8,75	4,0	8,8

Advantages

HIGH PULL OUT AND BODY TORQUE
 PROVIDES FLUSH FINISH TO BOTH SIDES OF THE SHEET

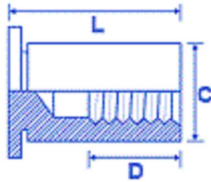
Comments

HOW TO SPECIFY
 FSUK M4-1 FLUSH NUT
 ONLY AVAILABLE IN STAINLESS TO ENSURE STRONG INTERNAL THREAD

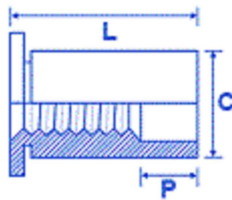
STAND-OFFS: Self Clinching

Fasteners

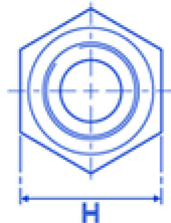
FSUK-BLIND



FSUK-THROUGH



Cross Flat



Description

The FSUK Stand-Offs are designed to serve as spacers normally to mount a PCB board in enclosures. They are available in a Blind or Through version and can be supplied in steel or stainless.

The steel version are hardened and designed to go into sheet less than 80 Rockwell B, the stainless version is designed to go into less than 70 Rockwell B.

They are designed to be installed into drilled or punched holes and must always be installed using a squeeze action. The tolerance on the hole must be $-0.00 + 0.08\text{mm}$.

Dimensions

thread	C	D	P	L	A/F	H.Size	Sheet
M2.5	4,18	L6-12 Max L14-16 =6.4 18-26= 9.5	L12-14 =4.8 L16-20 =8 L22-26 =11	5-26	4,8	4,2	1,0 (min)
M3	4,18	L6-12 Max L14-16 =6.4 18-26= 9.5	L12-14 =4.8 L16-20 =8 L22-26 =11	5-26	4,8	4,2	1,0 (min)
M3 (5.4)	5,39	L6-12 Max L14-16 =6.4 18-26= 9.5	L12-14 =4.8 L16-20 =8 L22-26 =11	5-26	6,4	5,4	1,0 (min)
M4	7,10	L6-12 Max L14-16 =6.4 18-26= 9.5	L12-14 =4.8 L16-20 =8 L22-26 =11	6-26	7,9	7,2	1,3 (min)
M5	7,10	L6-12 Max L14-16 =6.4 18-26= 9.5	L12-14 =4.8 L16-20 =8 L22-26 =11	6-26	7,9	7,2	1,3 (min)

Advantages

DESIGNED TO BE FLUSH ON ONE SIDE OF SHEET METAL
OFFERED IN A WIDE RANGE OF LENGTHS
SUITABLE FOR ALL THICKNESS OF SHEET OVER 1.0MM
AVAILABLE IN THROUGH AND BLIND VERSIONS
STEEL OR STAINLESS STEEL

Comments

HOW TO SPECIFY

FSUK BLD M4-12-S-TRIVALENT= M4-12 BLIND STEEL TRIVALENT PLATED
FSUK THRO M4-12 S-TRIVALENT= M4-12 THROUGH STEEL TRIVALENT PLATED

ALSO AVAILABLE IN STAINLESS AND SOME SIZES IN GRADE 400 STAINLESS

PLEASE CHECK WITH FSUK FOR AVAILABILITY OF STAINLESS/GRADE 400
PLEASE NOTE LENGTH (L) STARTS AT 6MM ON FSUK-BLIND

BROACH: Self Clinching

Fasteners

FSUK-BROACH



Dimensions

thread	A	B	C	D	L	A/F	H.Size
M2.5	5,56	4,60	1,5	1,5	1,53	4,4	4,22
M3	5,56	4,60	1,5	1,5	1,53	4,4	4,22
M4	8,74	6,75	1,5	2,0	1,53	6,4	6,40
M5	9,53	7,30	1,5	3,0	1,53	7,1	6,90

Advantages

SIMPLE PRESS IN INSTALLATION
AVAILABLE IN STAND-OFFS
DESIGNED NOT TO CRACK BRITTLE PCB'S

Comments

HOW TO SPECIFY
FSUK M3 BROACH-ET
ET= ELECTRO TINNED FOR PCB BOARDS

Description

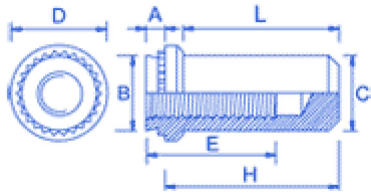
The FSUK broaching nuts are designed to be installed into resin based PCB Boards, they are installed using a flat punch with a squeeze action allowing the spigot to broach its way into the board. A stand-off version is also available.

These nuts ensure a deep metal thread in the boards without the risk of cracking.

They are designed to be installed into drilled or punched holes and must always be installed using a squeeze action. The tolerance on the hole must be $-0.00 + 0.08\text{mm}$

BNUTS

FSUK-BNUT



Dimensions											
thread	A	shank	B	C	D	E	H	L	H.Size	Sheet	Min Dis**
M3	0.97	1	4.20	3.84	6.35	5.3	9.6	8.5	4.22	1	4.8
M3	1.38	2	4.20	3.84	6.35	5.3	9.6	8.5	4.22	1.4	4.8
M4	0.97	1	5.38	5.2	7.95	7.1	11.2	9.8	5.41	1	6.9
M4	1.38	2	5.38	5.2	7.95	7.1	11.2	9.8	5.41	1.4	6.9
M5	0.97	1	6.33	6.02	8.75	7.1	11.2	9.8	6.33	1	7.1
M5	1.38	2	6.33	6.02	8.75	7.1	11.2	9.8	6.35	1.4	7.1
M6	1.38	1	8.73	7.8	11.1	7.8	14.3	12.7	8.75	1.4	8.6
M6	2.21	2	8.73	7.8	11.1	7.8	14.3	12.7	8.75	2.29	8.6

** = Min distance to hole c/l to edge

Advantages

Available in M3-M6 Thread Sizes
 Suitable for material thickness greater than 1.0mm
 Available in Heat-Treated Carbon Steel Zinc - Cr3 and 300 Series Stainless (Preferred)

Comments

How to Specify FSUK BNUT M6-2 S- Z For Steel Cr3 and FSUK BNUT M6-2 StSt for Stainless version

Description

The FSUK BNUT range has been designed to allow a Blind Self Clinching Stand-off located on the inside of the panel to stop protrusion of Screws and foreign objects. The steel version are hardened and designed to go into sheet less than 80 Rockwell B, the stainless version is designed to go into less than 70 Rockwell B. They are designed to be installed into drilled or punched holes and must always be installed using a squeeze action. The tolerance on the hole must be $-0.00 + 0.08\text{mm}$.